

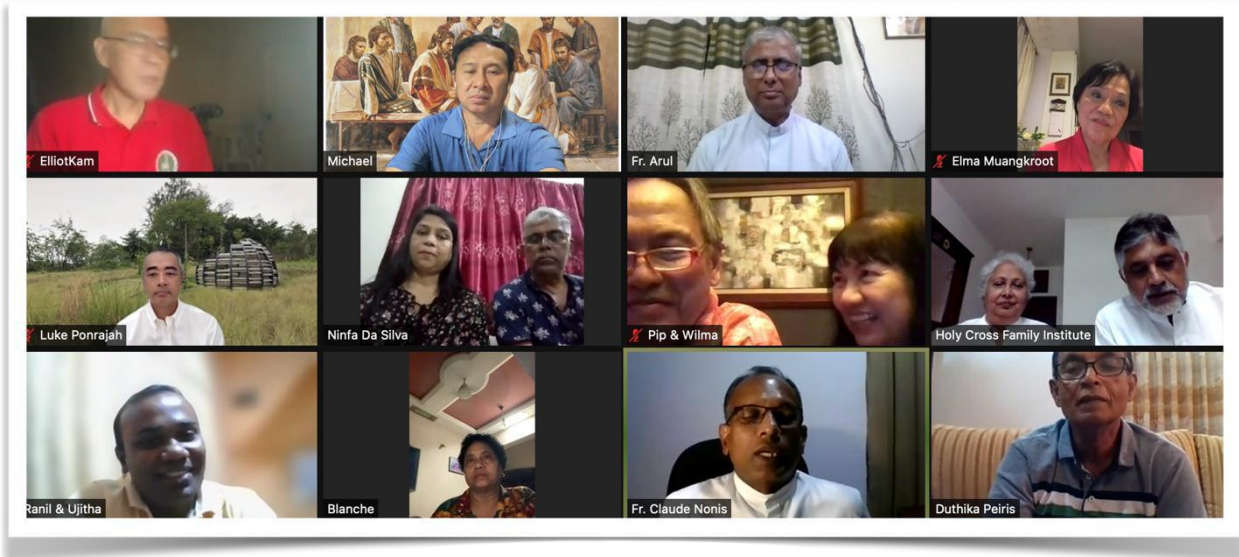
For CFM international unit – The venue is the Holy Redeemer Church, Bangkok.

Part II Applying the resolution of the 11th ACCFM.

- During the time of the pandemic, the government limited areas to keep the distance from people. The family society of Thailand decided to divide work zones into 2 regions. According to the way of life, dialect, tradition, and culture. Zone 1 (Central region) consists of the Archdiocese of Bangkok, Nakhon Sawan, Ratchaburi, Surat Thani, Chanthaburi, Chiang Mai, and Chiang Rai, a total of 7 dioceses. Zone 2 (Northeastern Region) consists of the Archdiocese of Tha Rae-Nong Saeng, Ubon Ratchathani, Udon Thani, and Nakhon Ratchasima, totaling 4 dioceses.
- We have meetings online throughout the 2 years in each region and twice a year for the whole country or both regions.
- In addition, we have also coordinated with various departments within the diocese and country, such as secular, laity, women's group, elderly group, and the

church committee in order to find ways to incorporate the CFM unit meeting handbook in their meetings.

- We also encourage the faithful to sing songs in the



liturgy by holding a church singing contest in the diocese called “Family Singing Project”. This project is to make the liturgy, including mass, more graceful and make Christians realize that no matter what life is, we can always praise the Lord. This project will be a guideline for all the dioceses in the future. Good relationships among the singers, and the faithful will enhance the atmosphere of brotherhood and unity in the church.







1. Spiritual Training Activities

We teach premarital teachings to married couples who are not married in the church. We also attend to help and congratulate the spouses who have their sacrament of matrimony in the Church. We also launched a campaign for each church in the diocese to pray the rosary together in the family as well as activities that promote the relationship of the family as well.

(photos)







To participate in the redemption plan of the Lord Jesus Christ, we have made visits to those who are suffering in life's hardships. For people who are struggling to make a

living during the Covid-19 crisis, the sick, and those who are far from the church, who have abandoned the church, we also attend funerals. We go to cheer them up by being friends in that suffering and let them see the love and light of the Lord through our work so that they may have hope, and encouragement, and when they are ready, they may return to Him.

We have publicized and invited Christian brothers and sisters to participate in family pastoral work by being concerned, caring, and helping each other so that our family can walk together.





BECs

All the dioceses in Thailand have BECs groups at their parish level. They have a monthly meeting. Some groups survive through their toddler age and grow stronger in quantity and quality.





Family Promotion Movement (i.e. Thai Marriage Encounter)



Part III Direction of the Future

- We'll go on doing what we have been doing. Because this is not our job but God's, who gives us the talents needed to help others. We'll also expand what we think will improve our family life to other dioceses that CFM/BECs/ME don't exist or fade away.